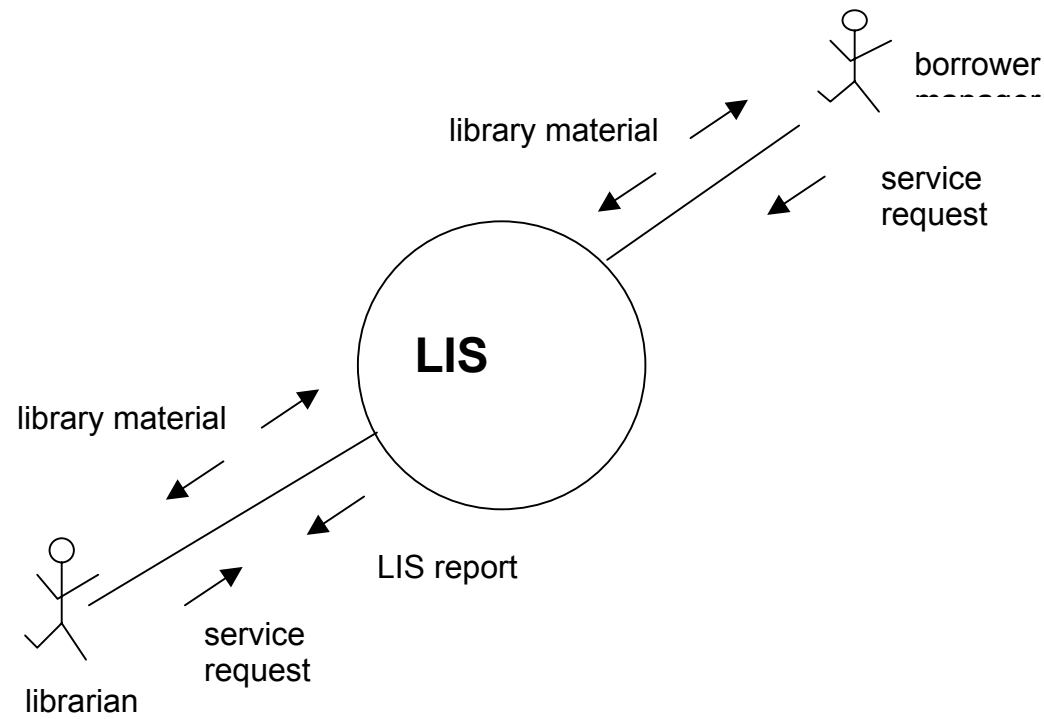


## REQ3 Exercise Key



<b>Primary Actor</b>	<b>Goal</b>	<b>Use Case</b>
Librarian	A librarian adds a new title to LIS.	Librarian _Adds_ Title
Librarian	A librarian deletes a title from the LIS..	Librarian _Deletes_ Title
Librarian	A librarian changes information about a title in the LIS (e.g. number of copies of a title)	Librarian _Changes_ TitleInfo
Librarian	A librarian adds a new borrower to LIS.	Librarian _Adds_ Borrower
Librarian	A librarian deletes a borrower from the LIS..	Librarian _Deletes_ Borrower
Librarian	A librarian changes information about a borrower in the LIS (e.g. telephone number of borrower)	Librarian _Changes_ BorrowerInfo
Librarian	A librarian gets a report on LIS holdings.	Librarian _Gets_ TitleReport
Librarian	A librarian gets a report on LIS borrowers.	Librarian _Gets_ BorrowerReport
Librarian	A librarian gets a report on LIS holdings.	Librarian _Gets_ LISReport
Borrower	A borrower borrows a copy of a title from the library.	Borrower _Makes_ Loan
Borrower	A borrower returns a copy of a title from the library.	Borrower _Returns_ Copy
Borrower	A borrower makes a reservation for a title (book or magazine).	Borrower _Makes_ Reserve
Borrower	A borrower cancels a reservation for a title (book or magazine).	Borrower _Cancels_ Reserve

Note: Only UCs with a clear relation LIS functionality are listed. However, other more generic UCs, such as users logging off and on, could have been listed.

**Use Case:** Librarian\_Adds\_Title

**Primary Actor:** Librarian

**Goal:** Add a new title to the library.

**Preconditions:**

- \* Librarian is logged into the LIS
- \* Service Menu screen is displayed.
- \* Title is not already part of the LIS.

**Main Success Scenario:**

Step	Actor Action	Step	System Reaction
1	Librarian selects "add title" menu item.	2	LIS requests ISBN number.
3	Librarian scans ISBN number.	4	LIS searches for title information through external database.
		5	LIS displays title information and asks for confirmation.
6	Librarian confirms title information	7	LIS request copy information (number of copies and their ID numbers).
8	Librarian enters copy information.	9	LIS asks if Librarian wants another service.
10a	Librarian answers NO	11a	LIS logs off librarian
10b	Librarian answers YES	11b	LIS displays services menu

**Post Conditions:**

- \* The new title is part of the LIS.
- \* Librarian logged off (if answer NO) or Service Menu displayed (if answer YES)

**Exceptions:**

- \* failure to select "add title" menu item
- \* invalid ISBN entered
- \* external database unavailable
- \* invalid copy information entered
- \* failure to scan ISBN
- \* failure to enter copy information
- \* failure to enter YES or NO

**Use Cases Utilized:** none

**Scenario Notes:** The interaction between the LIS and the external database is dealt with in a supplemental requirements specification.

**Use Case:** Borrower\_Cancels\_Reservation

**Primary Actor:** Borrower

**Goal:** Cancel a reservation made by a borrower.

**Preconditions:**

- \* Borrower is logged into the LIS
- \* Service Menu screen is displayed.
- \* Reservation is part of the LIS.

**Main Success Scenario:**

Step	Actor Action	Step	System Reaction
1	Borrower selects "cancel reservation" menu item.	2	LIS displays list of borrower reservations and asks borrower to select the one to be canceled.
3	Borrower selects reservation to be canceled.	4	LIS cancels reservation.
		5	LIS asks if borrower wants another service.
6a	borrower answers NO	7a	LIS logs off borrower
6b	borrower answers YES	7b	LIS displays services menu

**Post Conditions:**

- \* Reservation has been deleted from the LIS
- \* Borrower logged off (if answer NO) or Service Menu displayed (if answer YES)

**Exceptions:**

- \* failure to select "cancel reservation" menu item
- \* failure to select a reservation to be canceled
- \* failure to enter copy information
- \* failure to enter YES or NO

**Use Cases Utilized:** none

**Scenario Notes:** none

### Use Case Review Checklist

Purpose	To provide guidance in conducting a review of a Use Case (UC) model					
Directions	<ul style="list-style-type: none"> <li>• Number the UCs and enter the numbers in the boxes at the right.</li> <li>• For each UC, check each item and then mark the box at the right.</li> <li>• Complete the checklist for one UC before you review the next one.</li> <li>• After reviewing all individual UCs, complete the overall review items at the bottom of the checklist.</li> </ul>					
UC Name	Check name is in correct format.					
Primary Actor	Check that the actor represents a role for user of the system.					
Goal	<ul style="list-style-type: none"> <li>• The goal is related to the primary actor.</li> <li>• The goal is related a functional requirement</li> </ul>					
Preconditions	<ul style="list-style-type: none"> <li>• Check that each condition must be true in order to successfully carry our the Main Success Scenario steps ( to reach the UC goal).</li> <li>• Check that no Preconditions are missing.</li> </ul>					
Scenario Steps	Walk through the scenario steps checking: <ul style="list-style-type: none"> <li>• each step is clear and precise</li> <li>• each step is correct</li> <li>• there are no missing steps</li> <li>• there are no unnecessary steps</li> <li>• steps are written an appropriate level of detail</li> </ul>					
Postconditions	<ul style="list-style-type: none"> <li>• Check that each condition is true when the Main Success Scenario steps are completed.</li> <li>• Check that no Postconditions are missing.</li> </ul>					
Exceptions	<ul style="list-style-type: none"> <li>• Check that if each exception were true one or more Main Success Scenario steps could not be completed.</li> <li>• Check that no exceptions are missing.</li> </ul>					
UCs Used	<ul style="list-style-type: none"> <li>• Check that each UC listed is related to “this” UC.</li> <li>• Check that no related UCs are missing.</li> </ul>					
Scenario Notes	Check that all information included is relevant to “this” UC.					
Overview	Make a quick overall check of the UC template for clarity and completeness.					
Consistency	Check that all UCs, taken together, are consistent in their: <ul style="list-style-type: none"> <li>• level of detail</li> <li>• use of terms and phrases</li> </ul>					
Completeness	Check that for all UCs, taken together, there is <ul style="list-style-type: none"> <li>• coverage all the functional requirements of the system</li> <li>• no unnecessary redundancy or overlap between UCs</li> </ul>					